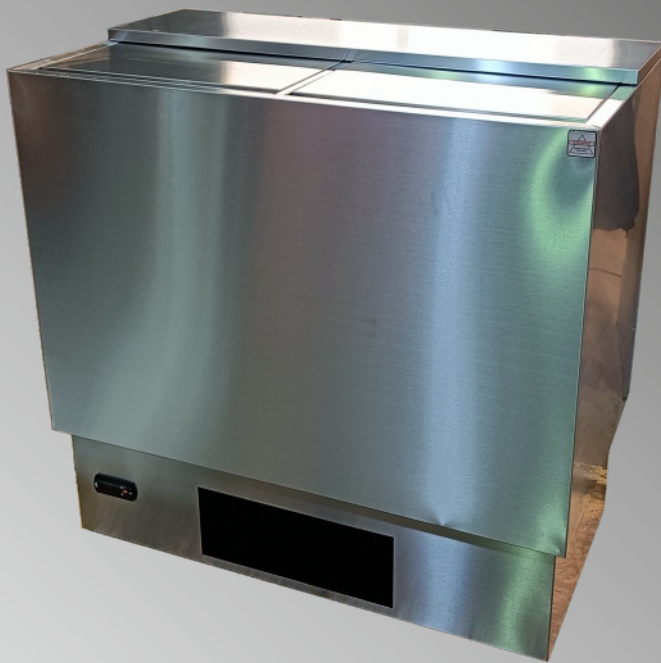


# Model TL120 / TL90 / TL60

**Servaclean**<sup>®</sup>  
Bar Systems   
Simply build a better bar



Designed AND manufactured  
exclusively in the UK

## Toploading Bottle Cabinets

The *TL* range is designed to be good to your pocket as well as the environment. Sliding lids keep the cold air in the cabinet where it belongs and improved insulation and efficient compressors maximise cooling performance while using less energy.

### Details

Models TL60, TL90 and TL120 are top-loading chilled cabinets designed for the storage of bottled or canned beverages in fast turnover environments. They are manufactured from brushed stainless steel with a stucco aluminium interior. The sliding insulated lids are also stainless steel. Insulation is efficient, ozone friendly polystyrene and the refrigerant used is R600a. The cabinets feature fan assisted circulation for optimum pull-down and a fan assisted condenser for efficiency. Options available include a speed rail for spirit bottles and castors.

## **Features**

Fan assisted evaporator for rapid cooling  
Fan assisted condenser for efficient performance  
Automatic defrost and re-evaporation  
Digital temperature controller  
Stainless steel exterior  
Aluminium interior

## **Options**

Castors  
Dividers  
Stainless steel interior  
Speed rail



## **Cabinet Specifications**

| Model Number                         | TL60                  | TL90 | TL120 |
|--------------------------------------|-----------------------|------|-------|
| <b><u>Physical Info</u></b>          |                       |      |       |
| Height (mm)                          | 900                   | 900  | 900   |
| Width (mm)                           | 600                   | 900  | 1200  |
| Depth (mm)                           | 500                   | 500  | 500   |
| No of Lids                           | 1                     | 2    | 2     |
| Nett Capacity (ltr)                  | 96                    | 157  | 210   |
| Bottle Capacity (330ml x 236mm high) | 132                   | 207  | 270   |
| Can Capacity (330ml x 115mm high)    | 168                   | 300  | 342   |
| Gross Weight Packed (kg)             | 55                    | 60   | 75    |
| <b><u>Technical Info</u></b>         |                       |      |       |
| Electrical                           | 220-240/1/50Hz        |      |       |
| Rated power                          | 150                   | 240  | 250   |
| Refrigerant Type                     | R600a hydrocarbon     |      |       |
| Refrigerant Charge (g)               | 60                    | 87   | 120   |
| Temperature Range (°C)               | +2 to +5              |      |       |
| Insulation Type                      | Polystyrene, CFC Free |      |       |
| Insulation Thickness (mm)            | 50                    |      |       |
| Approvals                            | CE                    |      |       |



FULL BAR SYSTEMS



MOBILE BARS



PORTABLE BARS



BAR DESIGN & PLANNING